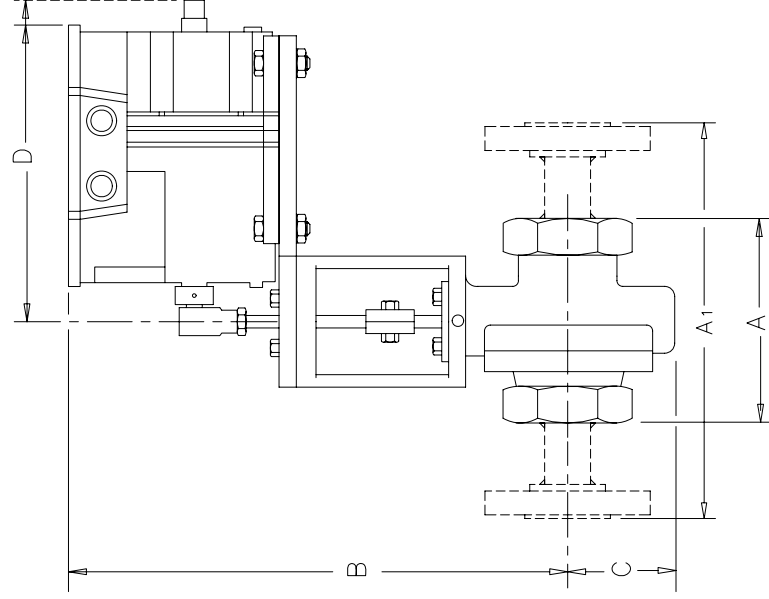


+

THREADED & FSW ENDS						FLANGED END						
VALVE SIZE	MAT'L	DIMENSIONS, INCHES			Wt. lbs.	VALVE SIZE	ANSI FLANGE	DIMENSIONS, INCHES			Wt. lbs.	
		A	B	C				D	A1	B		C
1/2" & 3/4"	D1/BRZ	3.62	12.95	2.18	7.50	17	150#	7.25	12.95	2.18	7.50	19
	CS/SS	3.65	12.95	2.18	7.50	17	300#	7.50	12.95	2.18	7.50	21
1"	D1/BRZ	4.25	13.20	2.62	7.50	20	150#	7.25	12.95	2.18	7.50	21
	CS/SS	4.25	13.20	2.62	7.50	20	300#	7.62	12.95	2.18	7.50	23
1 1/4"	D1/BRZ	4.25	13.20	2.62	7.50	20	150#	7.25	13.20	2.62	7.50	24
1 1/2"	D1/BRZ	4.50	13.45	2.62	7.50	21	300#	7.75	13.20	2.62	7.50	26
	CS/SS	4.65	13.70	2.75	7.50	21	150#	7.87	13.20	2.62	7.50	24
2"	D1/BRZ	4.50	13.45	2.62	7.50	22	300#	8.37	13.20	2.62	7.50	28
	CS/SS	5.50	13.61	3.00	7.50	22	150#	8.75	13.45	2.75	7.50	27
							300#	9.25	13.70	2.75	7.50	33
							150#	10.00	13.45	3.00	7.50	32
							300#	10.50	13.61	3.00	7.50	36

① FOR SPRING RETURN ADD 0.34 INCHES TO 'B' DIMENSION.

② FOR SPRING RETURN ADD 0.57 INCHES TO 'D' DIMENSION.



FN: MK33

1/2-2" MARK 33 MOTOR OPERATED VALVE

DRAWN BY	DATE
JLA	12/4/97
CHECKED BY	DATE

MK33

#### SPECIFICATION DATA

CUSTOMER \_\_\_\_\_  
 ORDER No. \_\_\_\_\_ SERIAL No. \_\_\_\_\_  
 TAG No. \_\_\_\_\_  
 VALVE TYPE \_\_\_\_\_ QTY. \_\_\_\_\_  
 BODY \_\_\_\_\_  
 END CONN. \_\_\_\_\_  
 INLET PRESS. \_\_\_\_\_ MAX.  $\Delta$  P \_\_\_\_\_  
 CONTROL RANGE \_\_\_\_\_  
 VALVE ACTION: RISE IN SIGNAL TO  OPEN  CLOSE  
 VALVE SEAT \_\_\_\_\_  Cv \_\_\_\_\_  
 MISC. \_\_\_\_\_  
 CERTIFIED \_\_\_\_\_ DATE \_\_\_\_\_

 RICHARDS INDUSTRIES  
 CINCINNATI, OHIO  
 U.S.A.

VALVE GROUP

+