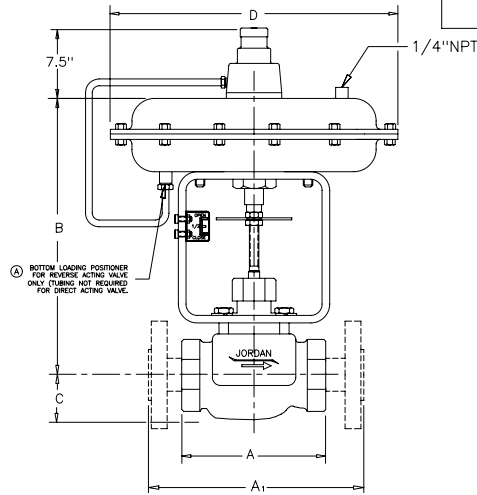


THREADED & FSW ENDS						
VALVE SIZE	ACTUATOR SIZE	DIMENSIONS, INCHES				Wt. lbs.
		A	B	C	D	
1/2" & 3/4"	35M	4.50	9.06	1.31	9.50	16
	55M	4.50	10.32	1.31	12.50	36
1"	35M	4.50	9.06	1.31	9.50	16
	55M	4.50	10.32	1.31	12.50	36
1 1/2"	55M	6.75	12.44	2.18	12.50	51
	85M	6.75	13.32	2.18	15.00	61
2"	55M	6.75	12.44	2.18	12.50	51
	85M	6.75	13.32	2.18	15.00	61

FLANGED END							
VALVE SIZE	ANSI FLANGE	ACTUATOR SIZE	DIMENSIONS, INCHES				Wt. lbs.
			A <sub>1</sub>	B	C	D	
1/2"	150#	35M	7.25	9.06	1.31	9.50	18
		55M	7.25	10.32	1.31	12.50	38
3/4"	150#	35M	7.25	9.06	1.31	9.50	20
		55M	7.25	10.32	1.31	12.50	40
1"	150#	35M	7.25	9.06	1.31	9.50	20
		55M	7.25	10.32	1.31	12.50	40
1 1/2"	150#	35M	7.25	9.06	1.31	9.50	20
		55M	7.25	10.32	1.31	12.50	40
2"	150#	35M	7.62	9.06	1.31	9.50	22
		55M	7.62	10.32	1.31	12.50	42
1"	300#	55M	7.25	10.32	1.31	12.50	20
		85M	7.25	11.19	1.31	15.00	42
3/4"	300#	55M	7.75	10.32	1.31	12.50	16
		85M	7.75	11.19	1.31	15.00	36
1 1/2"	300#	55M	11.00*	12.44	2.18	12.50	57
		85M	11.00*	13.32	2.18	15.00	67
2"	300#	55M	11.00*	12.44	2.18	12.50	63
		85M	11.00*	13.32	2.18	15.00	73
1"	300#	55M	10.00	12.44	2.18	12.50	61
		85M	10.00	13.32	2.18	15.00	71
3/4"	300#	55M	10.50	12.44	2.18	12.50	65
		85M	10.50	13.32	2.18	15.00	75



\* NOT ANSI STD.

SPECIFICATION DATA	
CUSTOMER	_____
ORDER No.	_____ SERIAL No. _____
TAG No.	_____
VALVE TYPE	_____ QTY. _____
BODY	_____
END CONN.	_____
INLET PRESS.	_____ MAX. Δ P _____
CONTROL RANGE	_____
VALVE ACTION: RISE IN SIGNAL TO	<input type="checkbox"/> OPEN
	<input type="checkbox"/> CLOSE
VALVE SEAT	_____ Cv _____
MISC.	_____
CERTIFIED	_____ DATE _____

 RICHARDS INDUSTRIES  
CINCINNATI, OHIO  
U.S.A.  
VALVE GROUP

A ADDED NOTE 02/19/04 JLW FN: MK78TP

1/2-2" MARK 78  
DIAPHRAGM CONTROL VALVE

DRAWN BY	DATE
JLW	08/06/02
CHECKED BY	DATE

MK78TP