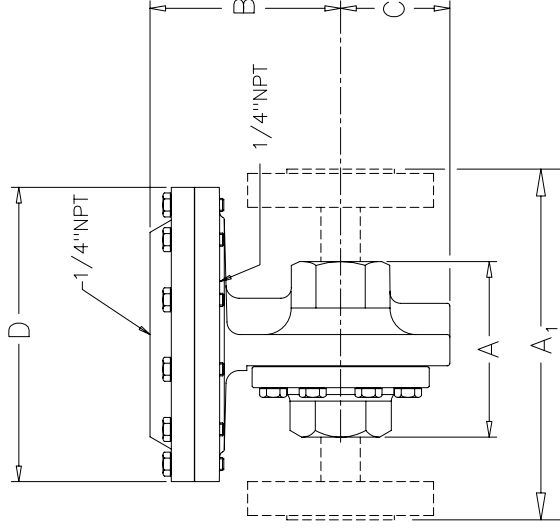


+

THREADED & FSW ENDS					FLANGED END								
SIZE	MAT'L	DIMENSIONS, INCHES				WGT. LBS.	ANSI FLANGE	DIMENSIONS, INCHES				Wt. lbs.	
		A	B	C	D			A <sub>1</sub>	B	C	D		
1/2 & 3/4"	DI/BRZ CS/SS	3.62	4.11	1.69	7.12	16	150#	D/BRZ CS/SS	D/BRZ CS/SS	ALL	ALL	D/BRZ CS/SS	21
1"	DI/BRZ CS/SS	4.12	4.31	2.62	7.12	18	300#	9.62① 10.25②	4.11 4.03	4.03	1.69	7.12	20
1 1/4"	DI/BRZ CS/SS	4.12	4.31	2.62	7.12	18	150#	9.62① 10.25②	4.11 4.03	4.03	1.69	7.12	20
1 1/2"	DI/BRZ CS/SS	4.50	4.27	2.31	7.12	20	300#	7.25 7.75②	4.31 4.31	4.60	2.62	7.12	22
2"	DI/BRZ CS/SS	4.50	4.49	2.75	7.12	22	150#	7.87	4.31	4.60	2.62	7.12	24
		5.50	4.82	2.75	7.12	26	300#	8.37	4.31	4.60	2.62	7.12	24
							150#	8.75	4.27	4.85	2.31	7.12	26
							300#	10.25②	4.27	4.85	2.31	7.12	32
							150#	10.00	4.49	4.82	2.75	7.12	32
							300#	10.50	4.49	4.82	2.75	7.12	36
													40

① NOT ANSI STD.

② IFE ONLY



MK56 &amp; 66

1/2-2" MARK 56 & 66  
AIR LOADED BACK PRESSURE REGULATOR & PRESSURE REDUCING VALVE.

F.N.:MK56

- REVISED 5/2/97 JLA

DRAWN BY DATE

JLA 4/13/96

CHECKED BY DATE

## SPECIFICATION DATA

CUSTOMER \_\_\_\_\_

ORDER No. \_\_\_\_\_ SERIAL No. \_\_\_\_\_

TAG No. \_\_\_\_\_

VALVE TYPE \_\_\_\_\_ QTY. \_\_\_\_\_

BODY \_\_\_\_\_

END CONN. \_\_\_\_\_

INLET PRESS. \_\_\_\_\_ MAX. Δ P \_\_\_\_\_

PRESS. RANGE \_\_\_\_\_ SET AT \_\_\_\_\_

VALVE ACTION: RISE IN PRESSURE TO  OPEN CLOSE

VALVE SEAT \_\_\_\_\_ Cv \_\_\_\_\_

MISC. \_\_\_\_\_

CERTIFIED \_\_\_\_\_ DATE \_\_\_\_\_



RICHARDS INDUSTRIES  
CINCINNATI, OHIO  
U.S.A.

VALVE GROUP \_\_\_\_\_

DRAWN BY DATE

JLA 4/13/96

CHECKED BY DATE

MK56/66

+